



MCDONALD'S HOT APPLE PIE

Enjoy a McDonald's Hot Apple Pie during this cold weather on
Tuesday March 2, 2010 during lunch recess.

Cost: \$1.00 (cash only please)

Proceeds benefit 8th grade DC Trip

MCDONALD'S HOT APPLE PIE

Order Form

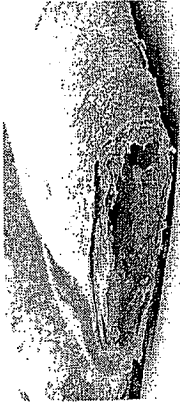
Student Name: _____

Homeroom: _____

Due by Wednesday

February 24, 2010

Contact: Deb Montelli 303.807.5741



MCDONALD'S HOT APPLE PIE

Enjoy a McDonald's Hot Apple Pie during this cold weather on
Tuesday March 2, 2010 during lunch recess.

Cost: \$1.00 (cash only please)

Proceeds benefit 8th grade DC Trip

MCDONALD'S HOT APPLE PIE

Order Form

Student Name: _____

Homeroom: _____

Due by Wednesday

February 24, 2010

Contact: Deb Montelli 303.807.5741



Two Upcoming Choir Performances

1. April 15: Pops Concert

PRA, 6:30pm

Choir will be singing as part of the talent show. The entire show starts at 6:30, and they will need to be here for the beginning of the talent show. The student council is in the process of putting together a performance order, so we don't know what time the choir will actually sing. As soon as I get this information, I will pass it along.

2. May 10: Dress Rehearsal	4:00pm
May 11: Annie	7:00pm

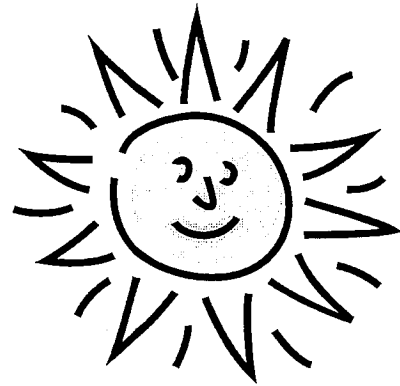
Both dates at Mountain Ridge Middle School

Choir will **not** be acting in Annie this year. There is actually a choir in the script that stands right in front of the stage. They will sing a number of songs with the actors to help fill out the sound in the auditorium.

It's not too late to join Choir!

If you'd like to participate in these last two concerts, start coming to choir practice **Thursday mornings @ 7:20**

PLATTE RIVER ACADEMY SUNSHINE FUND



The Sunshine Fund is a used uniform recycling program. This fund was originally established to ensure all students are able to comply with the dress code without causing financial stress. Gently worn, quality uniforms are donated by Platte River Academy parents and then put on display during Back-to-School Registration, the Back-To-School picnic, as well as at parent-teacher conferences in the fall and spring. Parents are also encouraged to contact The Sunshine Fund Chairperson if the need to purchase uniforms between sales arises. All proceeds go to PRA PTO. Help support the school and the environment by recycling!

The Sunshine Fund Chairperson:
Jamie Sitarz
Jamie@Sitarz.com